

SPARE PARTS EXPLODED VIEW
STORAGE GAS WATER HEATERS

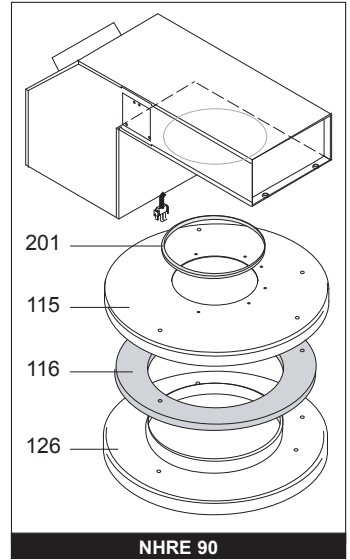
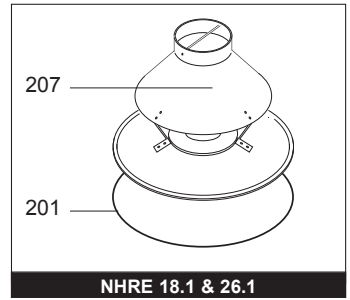
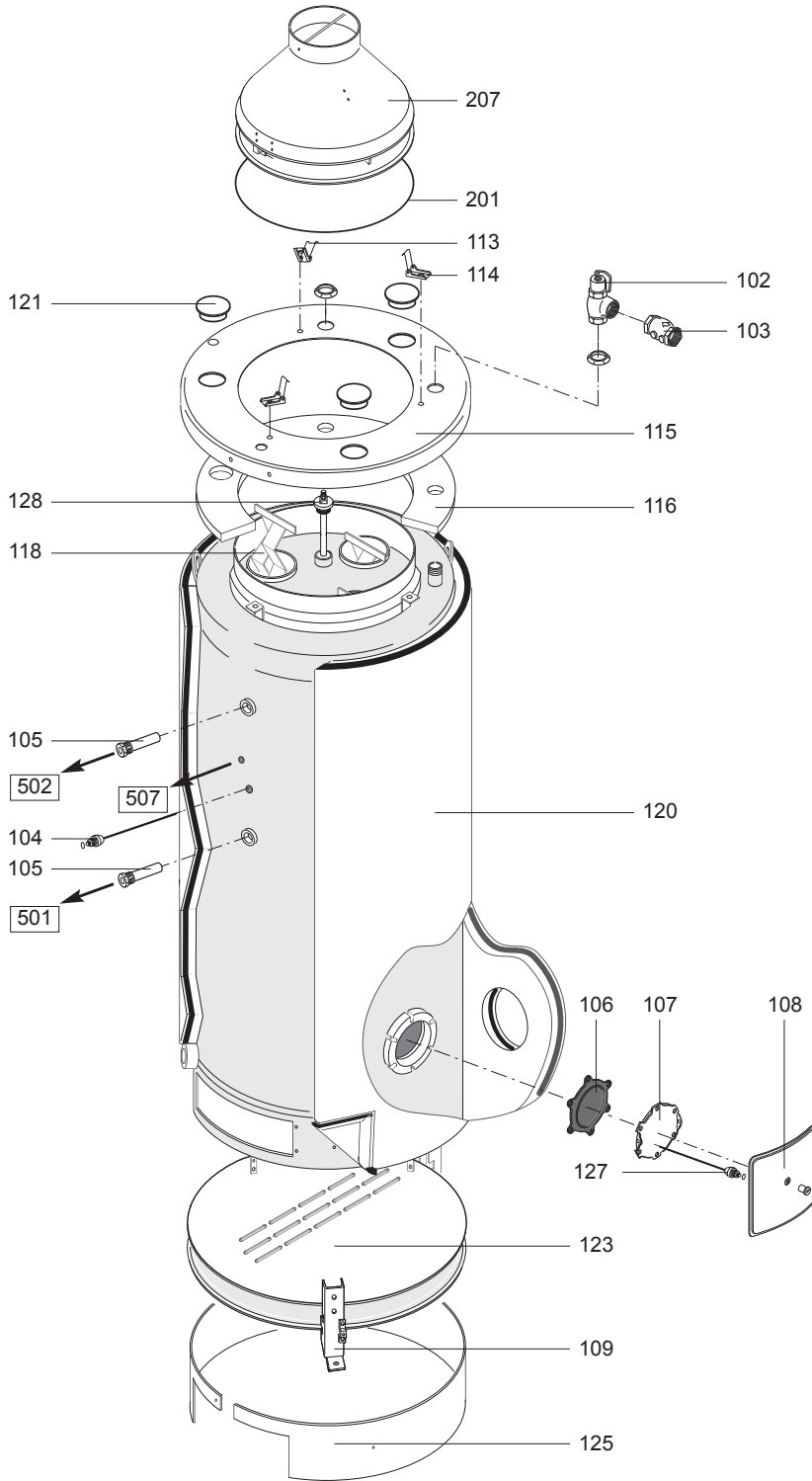
Model

NHRE PROTECH

R8202820-04 - 24/06/2013

1	006480	NHRE 18 ARISTON	03-1998	-
1	006485	NHRE 18 RADI	03-1998	11-2009
1	006490	NHRE 18 SITAM	03-1998	11-2009
1	006495	NHRE 18 SIMAT	03-1998	03-2008
2	006481	NHRE 26 ARISTON	03-1998	-
2	006486	NHRE 26 RADI	03-1998	11-2009
2	006491	NHRE 26 SITAM	03-1998	11-2009
2	006496	NHRE 26 SIMAT	03-1998	03-2008
3	006482	NHRE 36 ARISTON	03-1998	-
3	006487	NHRE 36 RADI	03-1998	11-2009
3	006492	NHRE 36 SITAM	03-1998	11-2009
3	006497	NHRE 36 SIMAT	03-1998	03-2008
4	006483	NHRE 60 ARISTON	03-1998	-
4	006488	NHRE 60 RADI	03-1998	11-2009
4	006493	NHRE 60 SITAM	03-1998	11-2009
4	006498	NHRE 60 SIMAT	03-1998	03-2008
5	006484	NHRE 90 ARISTON	03-1998	-
5	006489	NHRE 90 RADI	03-1998	11-2009
5	006494	NHRE 90 SITAM	03-1998	11-2009
5	006499	NHRE 90 SIMAT	03-1998	03-2008

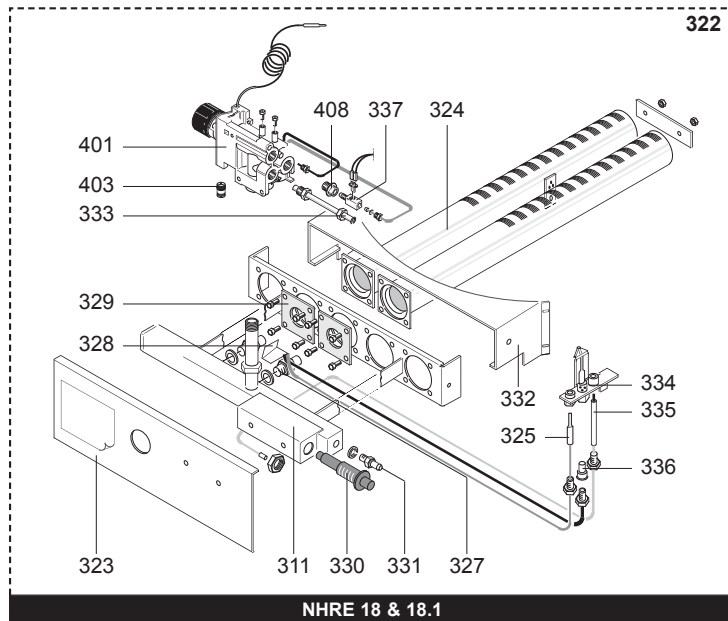
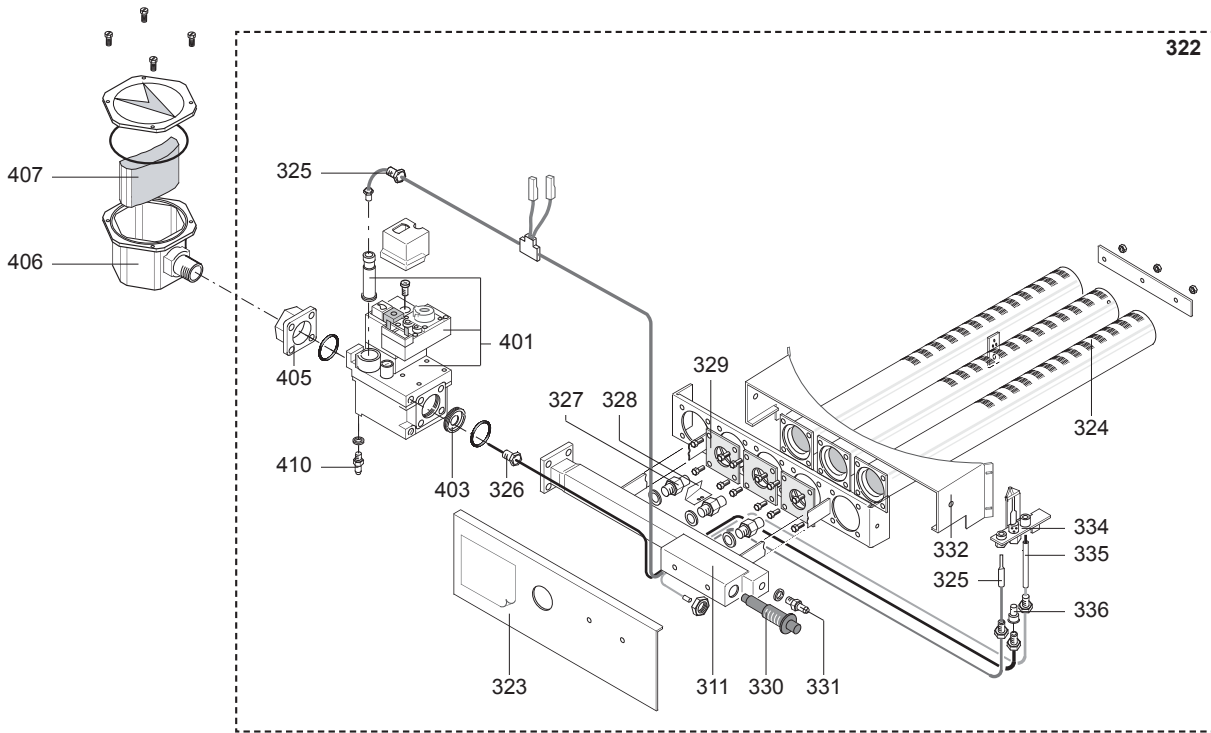
Col	Reference	Model type	Begin	End
-----	-----------	------------	-------	-----



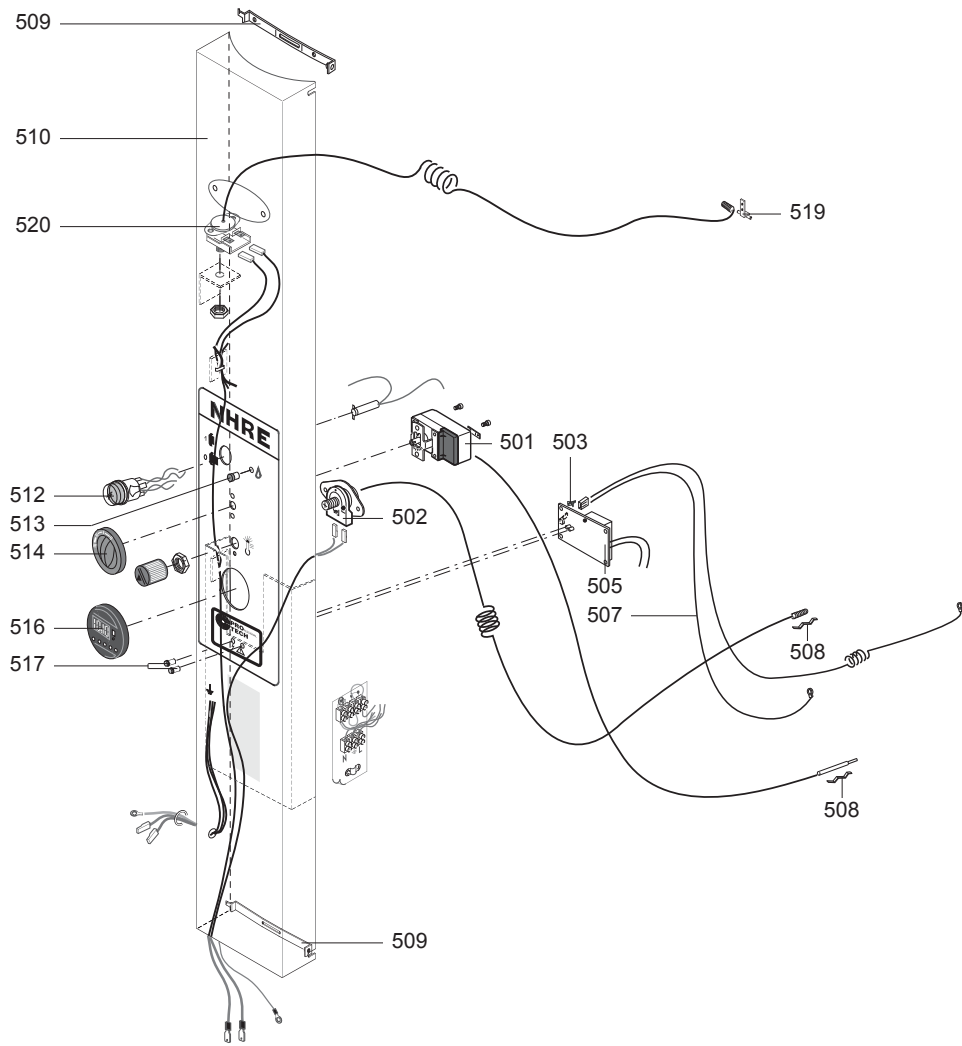
☉⇒	Description	Manf. Pt. N	Type																			31
				1	2	3	4	5	6	7	8	9	10	11	12	13	14	15	16	17	18	
0100	FRONT CASE																					
0102	PRESSURE RELIEF VALVE	340001					●	●														
	PRESSURE RELIEF VALVE	340005		●	●																	
	PRESSURE RELIEF VALVE	340258								●												
0103	NOT RETURN VALVE	340003		●	●	●	●															
	ONE WAY VALVE	340184																●				
0104	ELECTRODE	340407		●	●	●	●	●														
0105	SHEATH (THERMOSTAT)	338328		●	●	●	●	●	●													
0106	D.106 FLANGE GASKET	290139	PROTECH	●	●	●	●	●	●													
	GASKET (INSPECTION FLANGE)	343356		●	●	●	●	●	●													
0107	FLANGE D:110 (ANODE PROTECH)	61400338	PROTECH	●	●	●	●	●	●													
	INSPECTION FLANGE	397399		●	●	●	●	●	●													
0108	COVER (INSPECTION)	342068		●	●	●	●	●	●													
0109	FOOT	336648		●	●	●	●	●	●													
0113	FIXING BRACKET (UPPER COVER)	337468		●	●	●	●	●	●													
0114	FIXING BRACKET (FLUE HOOD)	337760		●	●	●	●	●	●													
0115	UPPER COVER	337459																●				
	UPPER COVER	337917		●	●	●	●	●														
0116	INSULATING PANEL	343469																●				
	INSULATING PANEL	343489		●	●	●	●	●														
0118	FLUE BAFFLE	337831		●															04/01			
	FLUE BAFFLE	337833					●															
	FLUE BAFFLE	337834								●												
	FLUE BAFFLE	337913																●				
	FLUE BAFFLE	337954		●															05/01			
	FLUE BAFFLE	337963			●														01/02			
0120	OUTER COVERING	343464		●																		
	OUTER COVERING	343465					●	●														
	OUTER COVERING	343467																●				
0121	ANODE PLUG CAP	342066		●	●	●	●	●	●													
0123	AIR GRATE	337638					●	●														
	AIR GRATE	337769		●																		
	AIR GRATE	337789																●				
0125	LOWER COVER	337765		●	●	●	●	●														
	LOWER COVER	337802																●				
0127	ANODE (PROTECH)	340406		●	●	●	●	●	●													
0128	KIT DRAIN SCREW + ANODE	60001635		●	●	●	●	●	●										07/10			
0200	FAN ASSEMBLY																					
0201	BACKFLOW HOOD GASKET	343344																●				
	GASKET (FLUE HOOD)	343006		●	●	●	●	●														
0207	FLUE HOOD WITH FLUE PROTECTION	61400358		●															04/01			
	FLUE HOOD WITH FLUE PROTECTION	61400360					●															
	FLUE HOOD WITH FLUE PROTECTION	61400361								●												
	FLUE HOOD WITH FLUE PROTECTION	61400362																●				
	FLUE HOOD WITH FLUE PROTECTION 18.1	61400363		●															05/01			
	FLUE HOOD WITH FLUE PROTECTION 26.1	61400364			●														01/02			

NHRE PROTECH

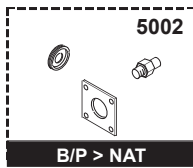
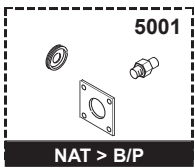
Storage Gas Water Heaters



☉⇒	Description	Manf. Pt. N	Type																		
				1	2	3	4	5	6	7	8	9	10	11	12	13	14	15	16	17	18
0300	BURNER ASSEMBLY																				
0311	GAS COLLECTOR	339446			●	●															
	GAS COLLECTOR	339448					●														
	GAS COLLECTOR	339450						●													
0322	BURNER (NG)	339407	NAT	●																	
	BURNER (NG)	339408	NAT		●																
	BURNER (NG)	339409	NAT			●															
	BURNER (NG)	339411	NAT				●														
	BURNER (NG)	339413	NAT					●													
0323	CASE DOOR (FRONT)	337775		●	●	●	●														
	CASE DOOR (FRONT)	337792						●													
0324	BURNER (L=560MM)	339328				●	●														
	BURNER (L=600MM)	339327						●													
	BURNER (PILOT SUPPORT) L=520MM	339331		●	●							●									
	BURNER (WITH L=560MM PILOT SUPPORT)	339329				●	●														
	BURNER L=520MM	339330		●	●		●	●													
0325	THERMOCOUPLE	340327		●																	
	THERMOCOUPLE	990121			●	●	●	●													
0326	PILOT BURNER INLET PIPE	338345				●	●														
	PILOT BURNER INLET PIPE	338347			●							●									
	PILOT BURNER INLET PIPE	338373		●																	
0327	INJECTOR D: 1.70	339458	B/P		●							●									
	INJECTOR D: 1.90	339451	B/P			●	●														
	INJECTOR D: 2.10	339356	B/P									●									
	INJECTOR D: 3.25	339352	NAT			●	●														
	INJECTOR D: 3.65	339353	NAT					●													
	MAIN BURNER JET	339354	B/P	●			●	●													
	MAIN BURNER JET	339351	NAT	●	●		●	●													
0328	BAFFLE PLATE	337049		●	●	●	●	●													
0329	AIR LIMITER	337041	NAT	●																	
	NG D.26 AIR LIMITER	337534	NAT		●																
	NG D.28 AIR LIMITER	337703	NAT				●	●													
0330	IGNITER	340019		●	●	●	●	●													
0331	INTAKE (PRESSURE)	346086		●	●	●	●	●													
0332	BURNER SUPPORT	337763		●	●	●	●														
	BURNER SUPPORT	337788										●									
0333	PIPE (GAS INLET)	338476		●																	
0334	BURNER (PILOT)	339377		●	●	●	●	●													
0335	IGNITION ELECTRODE WITH CABLE	340261		●	●	●	●	●													
0336	BURNER JET (PILOT)	339357	B/P	●	●	●	●	●													
	BURNER JET (PILOT)	289202	NAT	●	●	●	●	●													
0337	SAFETY BLOCK	340081		●																	
0400	GAS SECTION																				
0401	GAS VALVE	340259			●	●	●	●													
	GAS VALVE (LPG)	340366	B/P	●																	
	GAS VALVE (NG)	340365	NAT	●																	
0403	RESTRICTOR D: 10.60	346202	NAT									●									
	RESTRICTOR D: 2.5	346184	NAT	●																	
	RESTRICTOR D: 2.8	346185	B/P	●																	
	RESTRICTOR D: 6.0	346179	NAT		●																
	RESTRICTOR D: 7.50	346177				●															
	RESTRICTOR D: 8.85	346178	NAT					●													
0405	GAS VALVE FLANGE	346084		●	●	●	●	●													
0406	GAS FILTER	340336		●	●	●	●	●													
0407	GAS FILTER CARTRIDGE	340337		●	●	●	●	●													
0408	ELECTROMAGNET	340364		●																	
0410	INTAKE (PRESSURE)	346086			●	●	●	●													



5000



☉⇒	Description	Manf. Pt. N	Type																			31
				1	2	3	4	5	6	7	8	9	10	11	12	13	14	15	16	17	18	
0500	ELECTRICAL BOX																					
0501	THERMOSTAT (REGULATION)	340367		●	●	●	●	●														
0502	HEAT SENOR	340358		●	●	●	●	●														
0503	FIXING CLIPS	925296		●	●	●	●	●														
0505	P.C.B. (ANODE - PROTECH)	925348-01		●	●	●	●	●														
0507	CABLE (ELECTRODE - L=300MM)	340410		●	●	●	●	●														
0508	FIXING SPRING (THERMOSTAT)	337544		●	●	●	●	●														
0509	FIXING BRACKET (SWITCHES)	337761		●	●	●	●	●														
0510	CONTROL FACIA	337863		●																		
	CONTROL FACIA	337865						●														
	CONTROL FACIA	337866							●													
	CONTROL PANEL (COMPLETE)	337864			●	●																
0512	BIPOLAR SWITCH	341170			●	●	●	●	●													
0513	COMPLETE SIGNAL LAMP	341169			●	●	●	●	●													
0514	THERMOSTAT REGULATION KNOB	397384						●	●													
	THERMOSTAT REGULATION KNOB	397417			●	●																
0516	TIMER OPENING COVER	342070			●	●	●	●	●													
0517	SIGNAL LAMP CAP	341300		●	●	●	●	●	●													
0519	THERMAL PROTECTION BRACKET	337779		●	●	●	●	●	●													
0520	HEAT SENOR	340358		●																04/01		
	HEAT SENOR	340358			●	●	●	●	●													
	HEAT SENOR	340393		●																05/01		
5000	ACCESSORIES																					
5001	CONVERSION KIT NAT > LPG	60000319		●																		
	CONVERSION KIT NAT > LPG	60000320			●																	
	CONVERSION KIT NAT > LPG	60000321				●																
	CONVERSION KIT NAT > LPG	60000323					●															
	CONVERSION KIT NAT > LPG	60000325						●														
5002	CONVERSION KIT LPG > NAT	60000326		●																		
	CONVERSION KIT LPG > NAT	60000327			●																	
	CONVERSION KIT LPG > NAT	60000328				●																
	CONVERSION KIT LPG > NAT	60000330					●															
	CONVERSION KIT LPG > NAT	60000332						●														

LIST OF THE ABBREVIATIONS

HW	: Hot water.
CW	: Cold water.
C	: Ceramic resistance (normal heating).
Ca	: Ceramic resistance (accelerated heating)
TP	: Immersion heater.
1F	: With fittings.
2F	: Without fittings.
3F	: With fittings and another outlet connection.
AMI	: With mixing valve.
SMI	: Without mixing valve.
PUISS	: Power of th appliance.
PN	: Appliance with normal pression.
LP	: Appliance with low pression.
PV	: Appliance with variable power.
PF	: Appliance with fixed power.

IDENTIFICATION PLATE

SERIAL NUMBER

12 Characters : 924 2 3 134 0115
 Product reference ———— Sequential number
 Year of manufacture ———— Manufacturing day

15 Characters : 03 126 0001 893077
 Year of manufacture ———— Product reference
 Manufacturing day ———— Sequential number

9 Characters : D 97 442118
 Month of manufacture : ———— Sequential number
A → January, B → February
C → March, etc... ———— Year of manufacture

10 Characters : 05 01 000001
 Year of manufacture ———— Sequential number
 ———— Month of manufacture

11 Characters : 05 09 0093320
 Year of manufacture ———— Sequential number
 ———— Month of manufacture

21 Characters : 3000115 XX 08115 0000001
 Product reference ———— Sequential number
 ———— Year (08) / Manufacturing day (115)

22 Characters : 3000115 XX 070416 0000001
 Product reference ———— Sequential number
 ———— Year (07) / Month (04) / Manufacturing day (16)

The indications mentioned on the prices, commercial or technical literature and the scheme are written for your guidance and are available at a given time. The CONSTRUCTOR retains the power to modify the presentation, the form, the size, the conception or the material of the products.